

# fHR studies @Erasmus MC

**Neeltje van Haren**

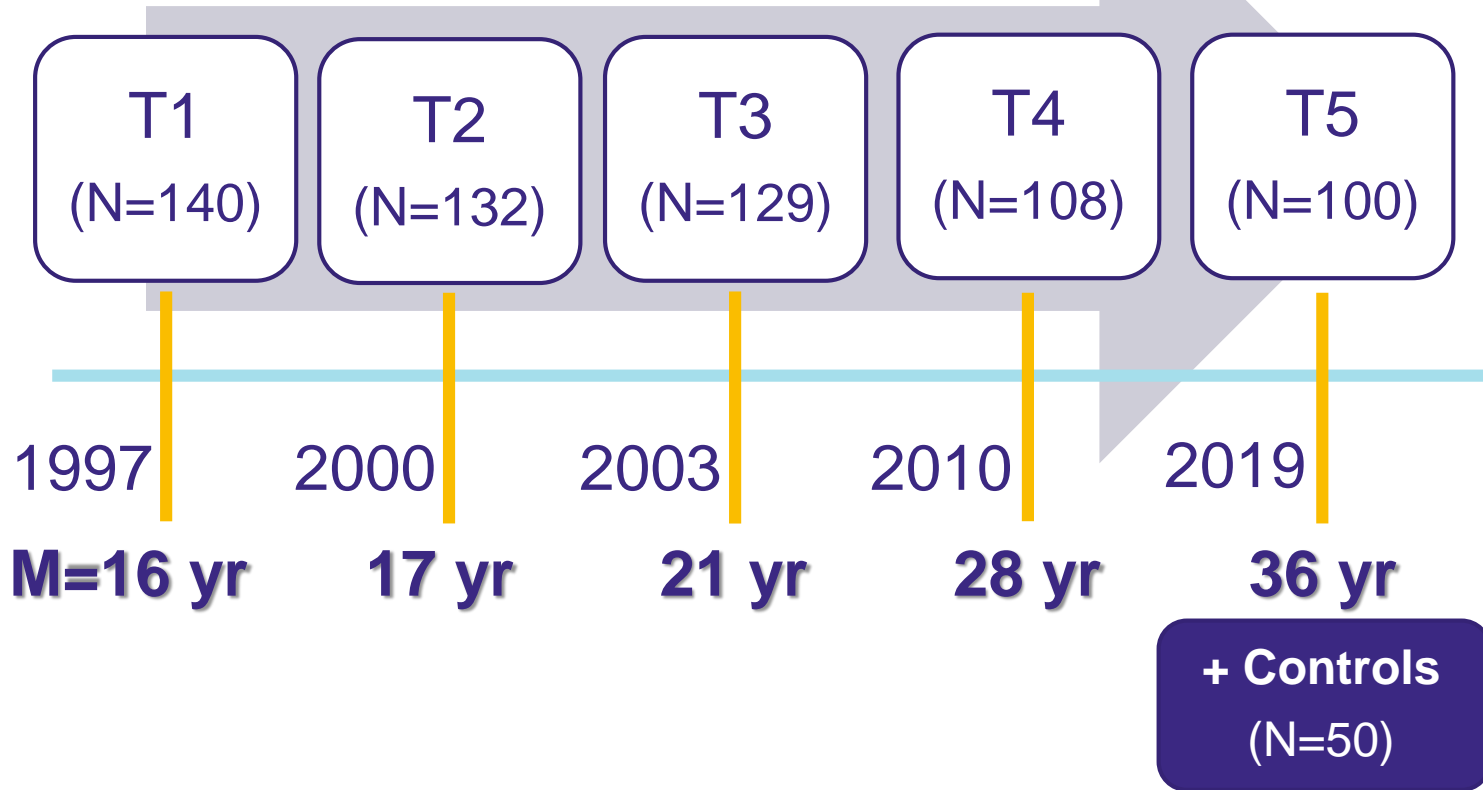
Erasmus University Medical Center

Department child and adolescent psychiatry/psychology

PARADISE, 22-03-2023

# Dutch Bipolar Offspring Study



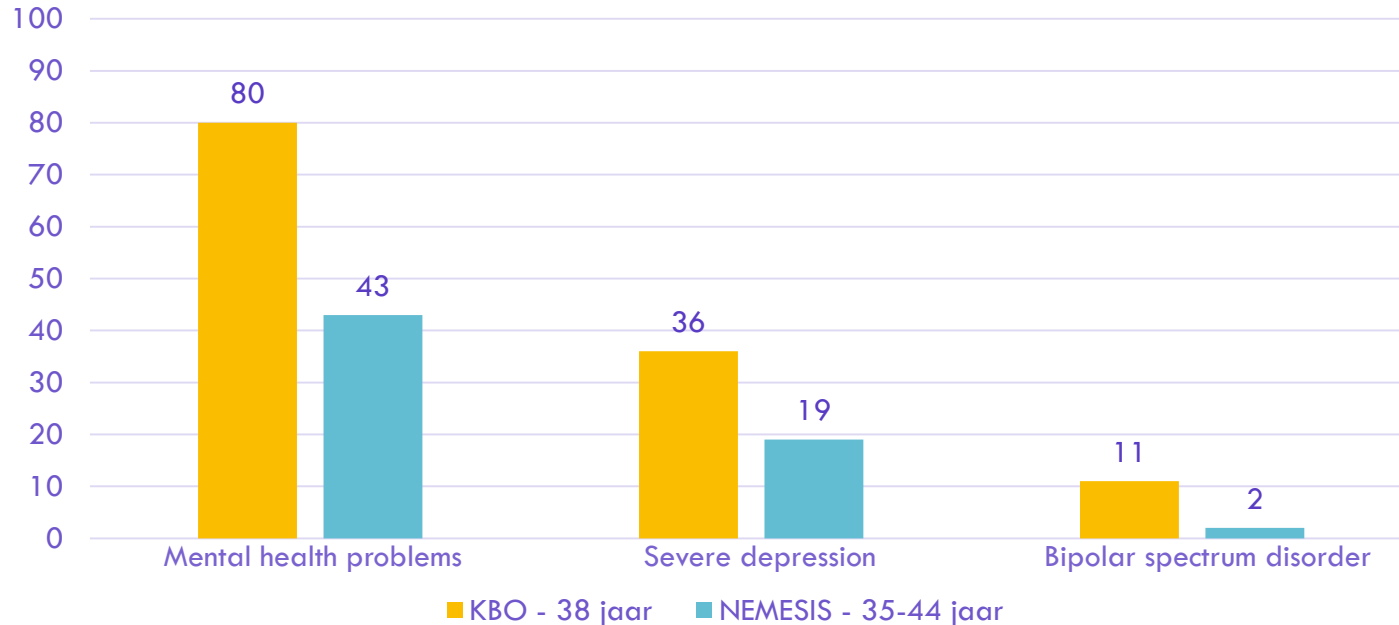


## Domains

- Psychopathology, diagnoses & symptoms (KSADS & SCID, symptom severity scales)
- ASEBA questionnaires (multi informant)
- Life events/trauma [Brugha, JTV, CTQ]
- Coping [UCL]
- Temperament/personality [VTCL]
- Drug (ab)use [CIDI], medication use
- Cognition
  
- Blood [immuno, cortisol, *GWAS to be done*]

# Psychiatric problems around age 38

- Lifetime prevalence DSM-IV classifications



*Helmink, Mesman, Hillegers (in progress)*

## Mood and Resilience in Offspring



1

Cohort study: To understand the development of mood disorders in offspring of parents with mood disorders (uni/bipolar depression)

2

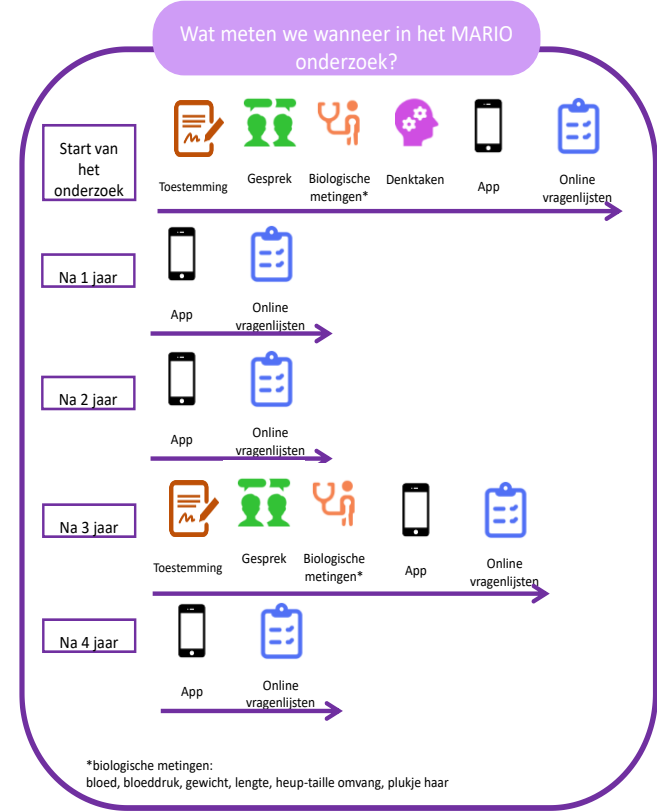
Screening study: To recognize mood disorders in offspring of parents with mood disorders by screening in clinical practice

3

Intervention study: To prevent the onset of mood disorders by providing an online preventative intervention

# Cohort study

- Participant is between 10-25 years old and has a parent with a mood (or psychotic) disorder
- Current N=487 (aim N=500) of which 98 from BRIDGE





## Domains

- Psychopathology, diagnoses & (subclinical)symptoms (KSADS & SCID, symptom severity scales)
- ASEBA questionnaires (multi informant)
- Life events/trauma [CTQ]
- Coping [UCL]
- Personality [BFI-2]
- Drug (ab)use [CIDI], medication use
- Cognition [WISC/WAIS]
- Sleep / sports / media use / body image / sexting / sexua.ity / self-esteem / peer problems / social support / parental rearing / parentification
- Resilience [Connor-Davidson resilience scale]
- Experience Sampling (ESM)
- Blood [GWAS]
- Hair

# Dutch Bipolar and Schizophrenia Offspring Study



BRIDGE: Brain Imaging, Development & Genetics

# Dutch Bipolar and Schizophrenia Offspring Study

	Szo			BDo			Co		
	T1	T2	T3	T1	T2	T3	T1	T2	T3
<b>N</b>	58	51	32	94	84	48	56	49	27
<b>age</b>	12.8	16.6		13.7	17.8		12.9	16.6	

+ approx. 5 yrs  
(in MARIO, no MRI,  
ongoing)

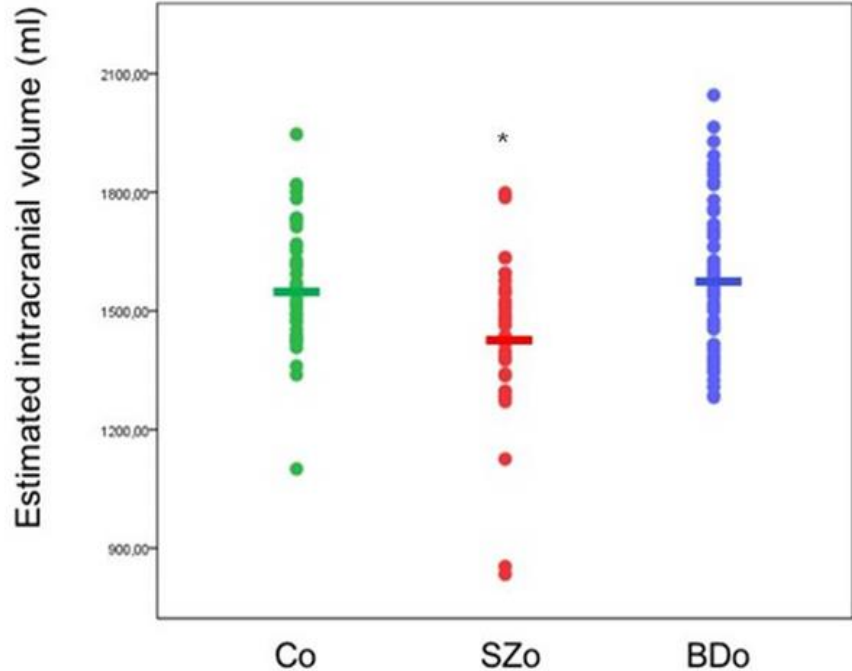
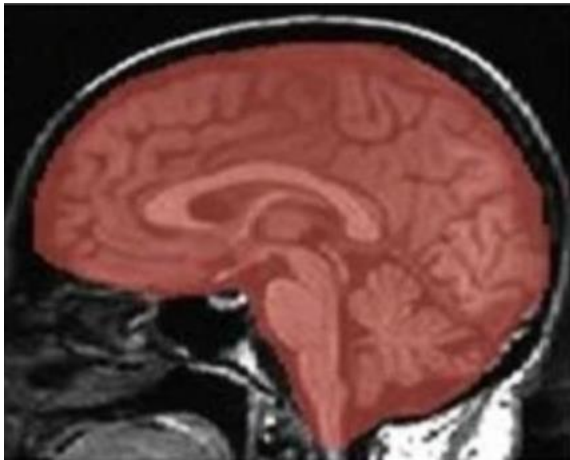
## Domains

- Psychopathology, diagnoses & (subclinical)symptoms (KSADS & SCID, symptom severity scales)
- ASEBA questionnaires (multi informant)
- Life events/trauma [LEDS, JTV,]
- Coping [UCL]
- Personality [NPV-(J)2]
- Drug (ab)use [CIDI], medication use
- Cognition
  
- Blood [GWAS]
- MRI (T1, DTI, rsfMRI, task fMRI [emotion, reward, SSAT, self-agency])

# Brain structure, IQ, and psychopathology in young offspring of patients with schizophrenia or bipolar disorder

Neeltje E.M. van Haren<sup>1,2\*</sup>, Nikita Setiaman<sup>1,2\*</sup>, Martijn G.J.C. Koevoets<sup>1</sup>, Heleen Baalbergen<sup>1</sup>, Rene S. Kahn<sup>1,3</sup> and Manon H.J. Hillegers<sup>1,2</sup>

<sup>1</sup>Department of Psychiatry, University Medical Center Utrecht Brain Center, Utrecht, The Netherlands; <sup>2</sup>Department of Child and Adolescent Psychiatry/Psychology, Erasmus University Medical Center, Sophia Children's Hospital, Rotterdam, The Netherlands and <sup>3</sup>Department of Psychiatry, Icahn School of Medicine at Mount Sinai, New York, New York, USA



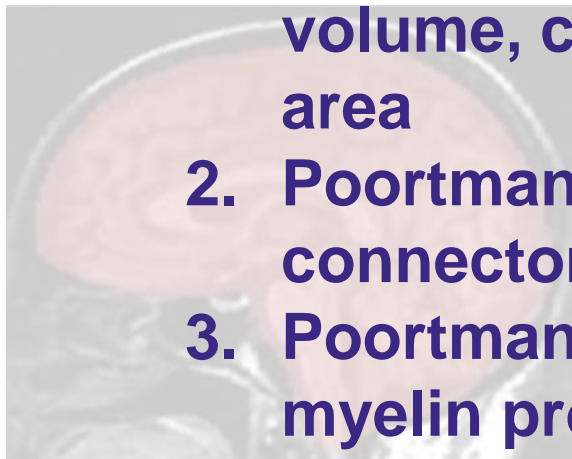
*Van Haren et al, Eur Psychiatry, 2020*

Neeltje E.M. van Haren<sup>1,2\*</sup>, Nikita Setiaman<sup>1,2\*</sup>, Martijn G.J.C. Koevoets<sup>1</sup>,  
Heleen Baalbergen<sup>1</sup>, Rene S. Kahn<sup>1,3</sup> and Manon H.J. Hillegers<sup>1,2</sup>

<sup>1</sup>Department of Psychiatry, University Medical Center, Erasmus University Medical Center, Sophia Children's Hospital, Rotterdam, The Netherlands and <sup>2</sup>Department of Psychiatry, Icahn School of Medicine at Mount Sinai, New York, New York, USA

## Currently ongoing:

1. **Setiaman et al. Changes in brain volume, cortical thickness, and surface area**
2. **Poortman et al. Changes in structural connectome**
3. **Poortman et al. Changes in intracortical myelin profiles**



Thank you, are there questions?